



4 High Street

, Slough, SL1 1EE

£1,000 Per month



4 High Street



Description

Conveniently located within walking distance to Slough train station and from Slough town centre, this large studio apartment comprises of good sized entrance hall, ample storage, large living area with double bed, wardrobe, chest of drawers and table and chairs. There is also a kitchenette with sink unit, plenty of cupboards, fridge/freezer, electric hob and microwave. The modern bathroom has a walk in shower, sink and wc. There is also a further communal kitchen which has an oven, washer dryer and plenty of storage, this is shared with one other studio.

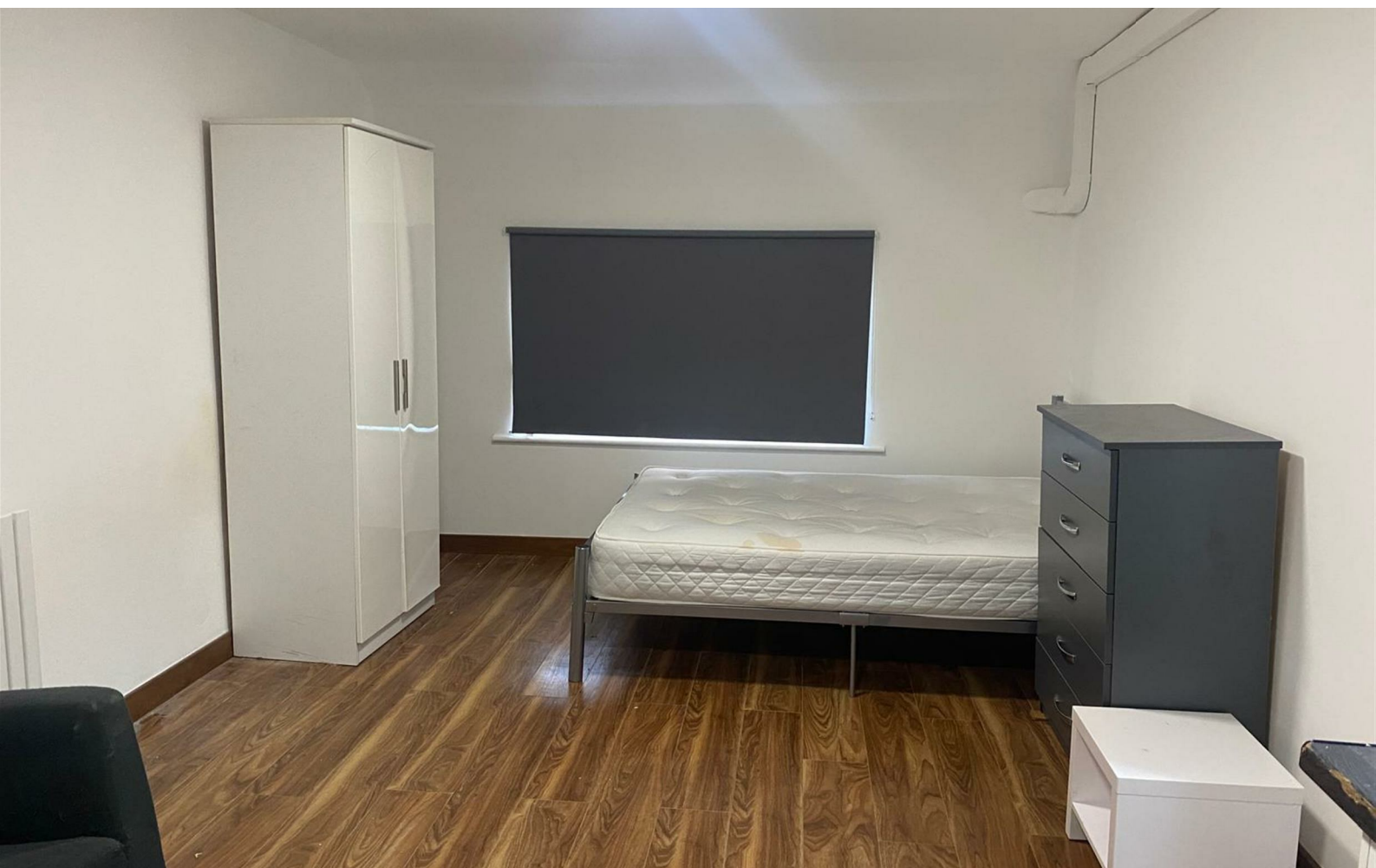
With fast access trains to Waterloo and Paddington (15mins). The M4 and M25 are also within easy reach, this property is perfect for commuters.

This spacious modern studio flat also benefits from being a short walk from local supermarkets, restaurants and Herschel Park & nature reserve.

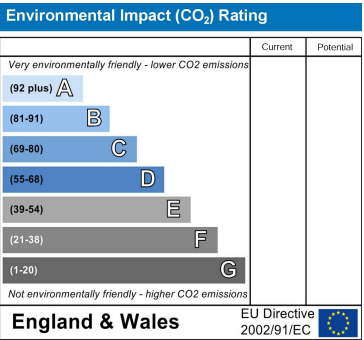
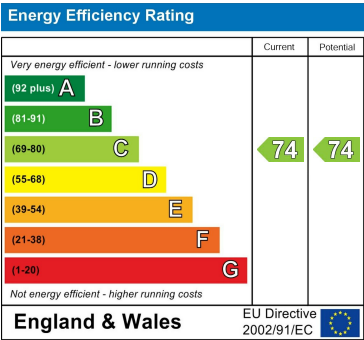
This Studio flat is available immediately All bills included in the rent, apart from electric. There is no gas at the property.

- Spacious Studio available immediately
- Open Plan living
- 0.4 miles to Slough Rail Station
- En Suite Shower Room
- Access to communal kitchen with oven and washer dryer (shared between two flats)
- All bills included (except electricity)
- Flexible Furnishings
- Excellent transport links
- Kitchenette includes hob, fridge freezer and microwave





Floor Plan



Viewing

Please contact our Head Office Office on 03333444385 if you wish to arrange a viewing appointment for this property or require further information.

These particulars, whilst believed to be accurate are set out as a general outline only for guidance and do not constitute any part of an offer or contract. Intending purchasers should not rely on them as statements of representation of fact, but must satisfy themselves by inspection or otherwise as to their accuracy. No person in this firms employment has the authority to make or give any representation or warranty in respect of the property.

